

RENO HOME

INSPIRING AREA HOMES

Best view in town

VIBRANT COLOR AND URBAN
SOPHISTICATION AT THE MONTAGE

7+

BIG STYLE IDEAS
FOR SMALL
HOMES

GARDEN DIARY
HELLO, HUMMINGBIRDS!

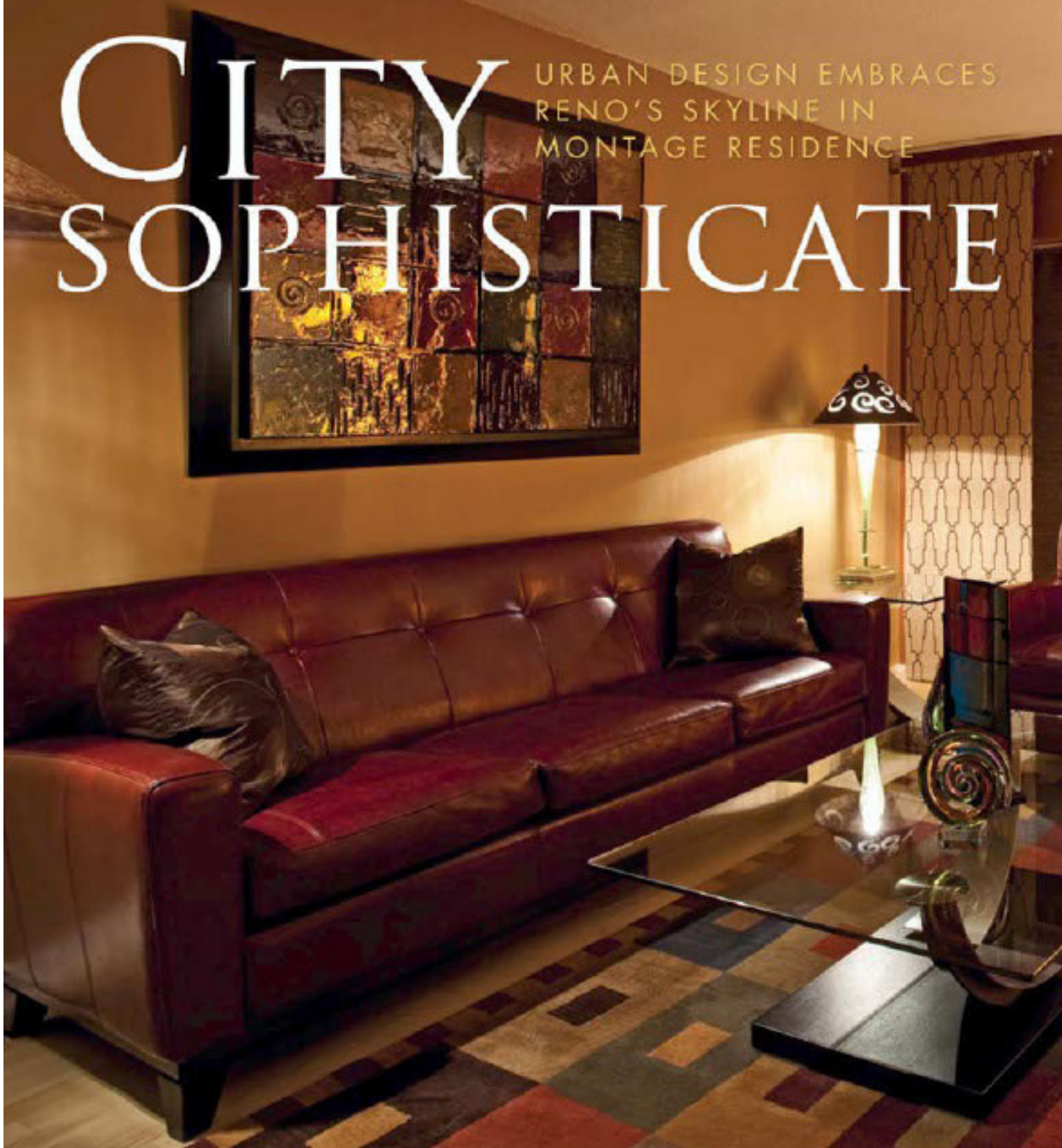
RENO
HOME

By Mikalee Byerman

Photos by Nick Rab

CITY SOPHISTICATE

URBAN DESIGN EMBRACES
RENO'S SKYLINE IN
MONTAGE RESIDENCE

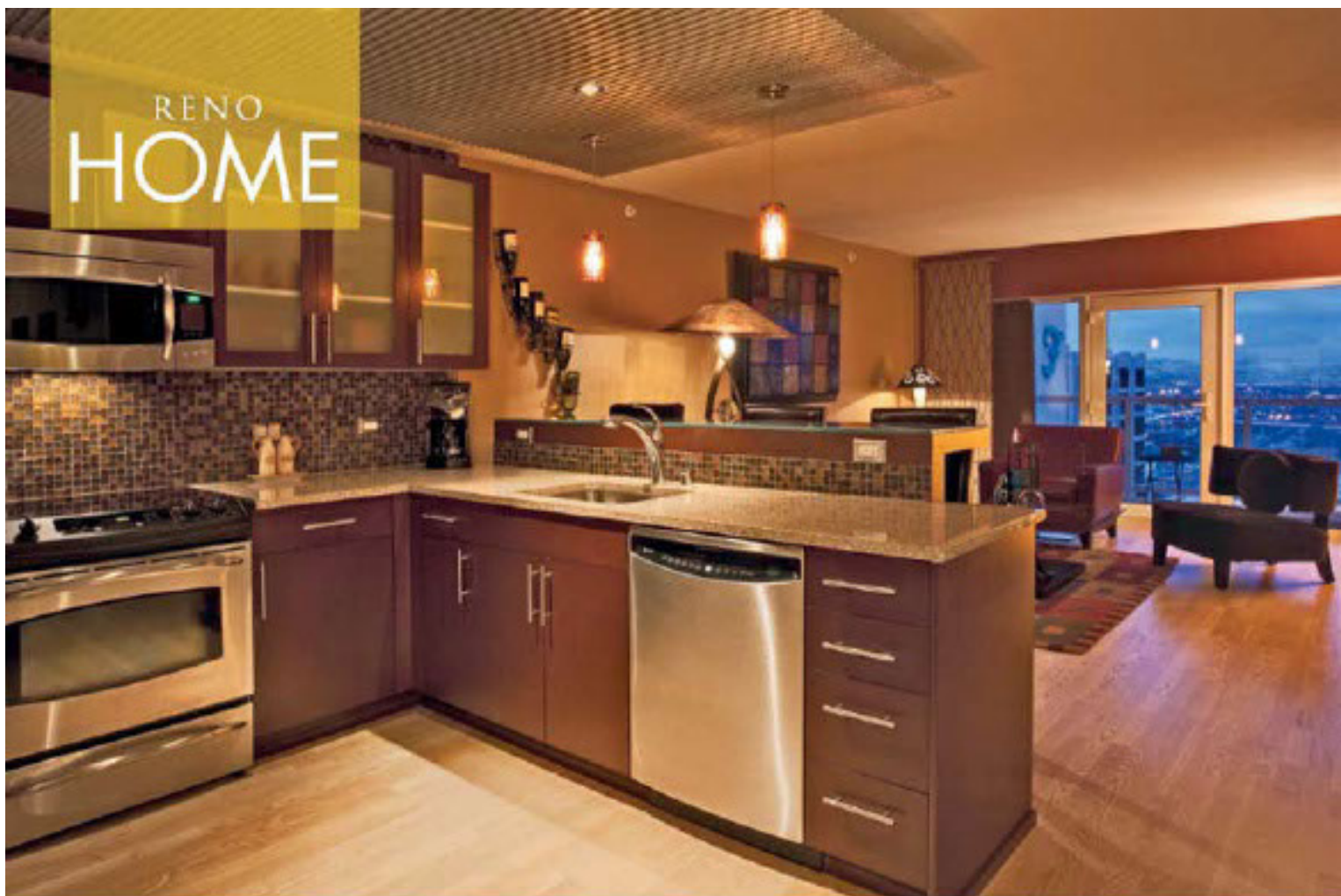




FRAME WORK

Designers Scott and Decker used the sweeping skyline view as the focal point of the room, accenting the frame with pieces exhibiting both straight lines (like in the dramatic light fixture) and artistic swirls.

RENO HOME



COLOR WASH

Bold red glass tile surrounds the bathroom sink. Scott and Decker's clients expressed an affinity for vibrant color, so the designing duo chose their favorite — Disco Inferno from Oceanside Glasstile, which is comprised of 59 percent recycled materials, including Corona bottles.

DESIGNERS BETTY SCOTT AND MARCIO DECKER, owners of Reno's Aspen Leaf Interiors, approached the design of their clients' one-bedroom-plus-den residence in the Montage as a composer would a piece of music.

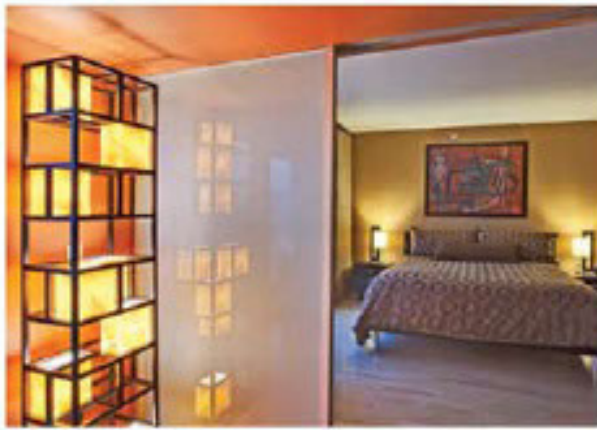
"We had such wonderful, vibrant materials to work with," Scott said. "We were able to bring everything to life through the composition — how each piece interacted with others. We wanted the materials and pieces to connect with each other and with the space."

The designing duo describes their clients' vision as an "urban contemporary, modern feel," which they accomplished through color and texture.

"The modern vibe really comes through in the combination of spirals and squares in the fabrics and accents," Decker said. "It just adds rhythm so the eye flows from one place to the next."

The designers paid special attention to materials that added interest and function, like a frosted-glass panel to sit atop a wood-slab breakfast bar and Kravet stationary window panels featuring a bold Michael Berman design.

"A lot of people are afraid of color, but we were so excited that these clients embraced it," Scott said. "We were able to use it to accent architectural elements and create a cohesive design."



ART PROJECT

The centerpiece of the master bedroom is an original work of art by designer Marcio Decker. *Abstract #8* was painted in 2002 using acrylic on canvas.

Designer Q&A:

BETTY SCOTT

ASPEN LEAF INTERIORS

1. What would be your best piece of advice for people who want to incorporate urban design elements into their homes?

Everything is possible when speaking of personal style, but one has to find that perfect balance.

2. What's your best design tip for clients working with small spaces?

The elements composing the space must be versatile — think multi-function.

3. What is your favorite element of this featured home in the Montage?

We love the urban/modern style here. The color scheme is fabulous, embracing the energy of reds and other warm tones.

4. Where do you get most of your design inspiration?

It depends on many different things. We travel a lot, and we're always collecting visuals, experiences, ideas ...

5. Where is your favorite locally owned hot spot for decorative elements?

We represent several special-order lines in our studio and love Juniper Hill.

6. Do you watch design shows on HGTV or another channel? If so, which is your favorite, and why?

Candice Olson is wonderful in *Divine Design*. It is great watching other designers solving a problem. She also doesn't imply that you could achieve the results in a weekend. Good design is a process.

Do you have a home to showcase in RENO Magazine?
Call 788-6556 or e-mail editor@renomagazine.com.

**FOREVER SPRING
INTERIORS**
For Lifestyles As Tasteful As Yours.



**Furniture • Lighting
Home Accessories
Custom Floral Design
Interior Redesign & Staging**

**9720 South Virginia St., Ste. B,
Reno ~ 775/851-0500**

**www.foreverspringinteriors.com
info@foreverspringinteriors.com**



**Monday-Saturday
10am - 6pm**
Located in Foothills Commerce Center, north of WinCo, at the end of the complex.